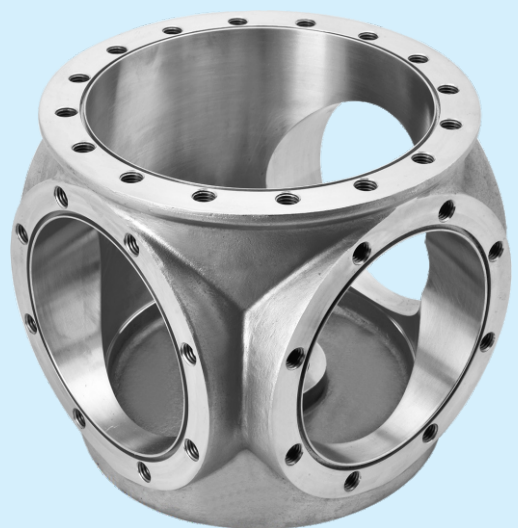
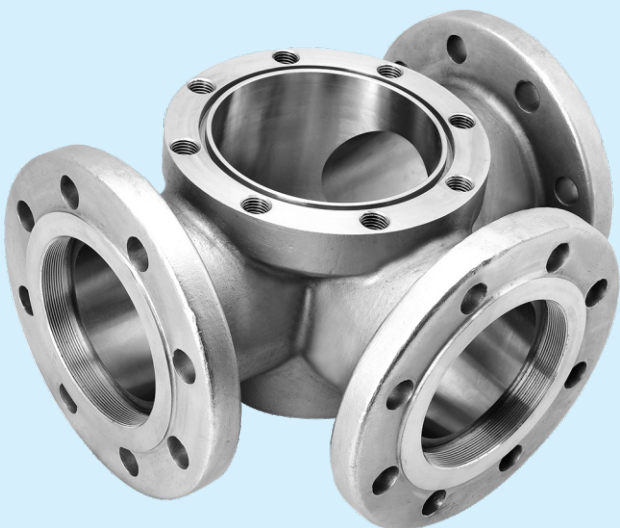


# **Turbo** Cast (India) Pvt. Ltd.

(Commercial Division)



## Investment Castings



# About Us

Turbo Cast (India) Pvt. Ltd. is India's First Indigenous Investment Casting foundry, started in 2015, especially for Aerospace, Defense, Medical Application & Aluminum Alloys, Accredited for AS9100D & Nadcap (NDT) certification. We have also planned to get Nadcap in Heat treatment by end of 2019 & Nadcap in Welding by 2020.

In 2018, I have sold down my shares / stakes from two Investment Casting Foundries (Commercial Application) which were started in 1995 & 2005 and started separate Commercial Division in Turbo Cast to serve our esteemed Commercial Customers. In Commercial Division, we have additional approval of P.E.D. (2014/68/EU) & AD 2000-Merkblatt W0 of TUV NORD, Germany.

## Product

**Lost Wax Investment Castings for Valves, Pumps, Marine, Automobile, Renewable Energy & Nuclear Application**

## Manufacturing Capabilities

**Single Piece Size :** 25 X 10 X 5 mm (Min.) to 600 X 300 X 200 mm (Max)  
**Single Piece Wt. :** 45 Grams to 45 Kg. for Steel & 15 Grams to 15 Kg. for Al.

## Material of Product

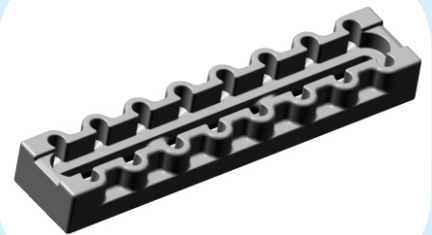
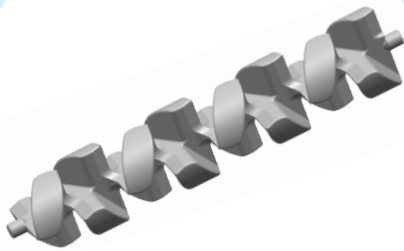
**Stainless Steel** : 1.4408, 1.4581, CK3MCuN, CN7M, CK-20, CF3M, MSRR 6527, etc.  
**Low Alloy Steel** : WCB, WCC, LCB, LCC, WC6, 1.0619, 1.6220, 1.7744.5, Gr. A2, GG20, etc.  
**Cobalt Alloys** : Stellite-6, Stellite-12, Stellite-20, Co28Cr6Mo, etc.  
**Copper Alloys** : Aluminum Bronze, Tin Bronze, Phosphorus Bronze, etc.  
**Nickel Alloys** : CW12MW, CZ-100, M35-1, CW6MC, CU5MCuC, N12MV, Inconel, etc.  
**Prec. Hard. Steel** : 17-4 PH, 15-5 PH, etc.  
**Duplex Steel** : Gr.1B (CD4MCuN), Gr.3A, Gr.4A, Gr.5A, Gr. 6A, etc.

## Testing & Inspection Facilities

Chemical Analysis (Spectro) & Mechanical Testing  
Hardness & Impact Testing.  
Dye Penetrant Testing  
Magnetic Particle Inspection  
Microstructure Review & Grain Size Measurement.  
Inclusion Rating & Ferrite Content Checking.  
Intergranular Corrosion Test.

Casting Solidification Simulation Software  
Crevice & Pitting Corrosion Test.  
Radiography Test (Outsource NABL Lab).  
Hydro Test. Up to 10,000 PSI (700 Kg/cm<sup>2</sup> )  
Mahr GmbH, Germany make Roughness Tester.  
CMM from Carl Zeiss (700 X 1000 X 600)  
Radiation Alert Digilert 100 (Mineralab LLC, USA)

# Products





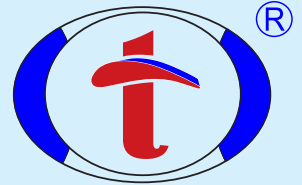
## Our Business Division

### *Aerospace Division*

- ▶ Aerospace Application
- ▶ Defense Application
- ▶ Medical Application
- ▶ Electronics Application
- ▶ Turbo Charger Application
- ▶ Aluminum Alloy

### *Commercial Division*

- ▶ Valves Application
- ▶ Pumps Application
- ▶ Marine Application
- ▶ Automobile Application
- ▶ Renewable Energy
- ▶ Nuclear Application



Casting for Universe

## Our Valuable Customers



## Our Approval / Accreditation

- > ISO 9001:2015 of TUV NORD, Germany.
- > AD 2000-Merkblatt W0 of TUV NORD, Germany.
- > P.E.D. (2014/68/EU) of TUV NORD, Germany.
- > Member of Investment Casting Institute, USA

# **Turbo Cast (India) Pvt. Ltd.**

#### Regd.Office:-

"Satyam", 35 / Silver Sand, Opp.- Big Bazar,  
150 Feet Ring Road, Rajkot - 360 001, India.

**E-Mail** : [info@turbo-cast.com](mailto:info@turbo-cast.com)

**Website** : [www.turbo-cast.com](http://www.turbo-cast.com)

#### Works:-

Survey No. 21, Village :- Biliyala,  
Rajkot-Gondal National Highway,  
B/h Pan Agri Export, Rajkot - 360311  
**Phone:-** +91-2825 - 280301 / 280302